

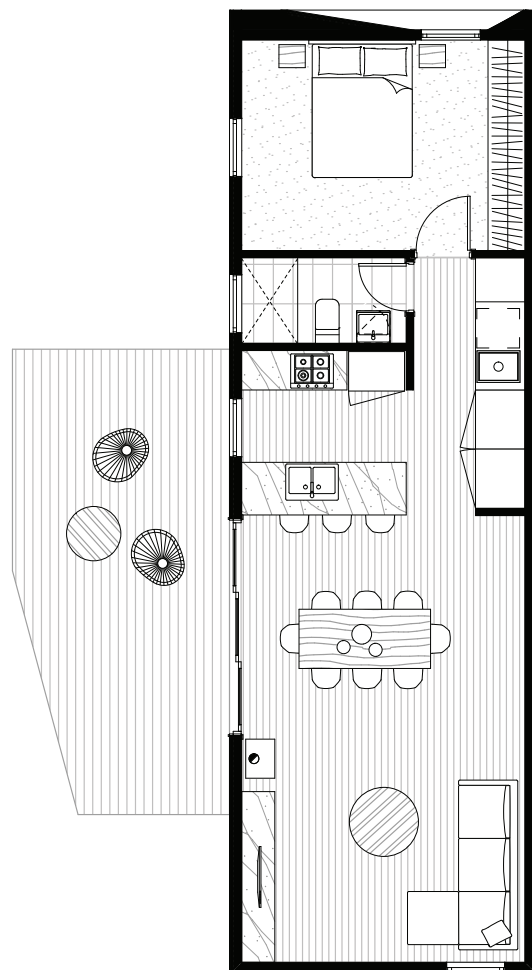
Marlo 01

Marlo captures with careful consideration all the things essential to a large family. Boasting a generous open plan kitchen and living area, Marlo is excellent for social entertaining or completely closing off from the world for shelter, warmth and intimacy. The living area opens onto an expansive deck, which allows for seamless connection to nature. This format is suitable for urban or rural sites and can be oriented to maximise northerly solar gain through the living areas taking advantage of passive heating and cooling techniques.

Size: 69 (m2)

Dimensions: 14.7 x 4.7(m)

Rooms: bedroom
bathroom
Euro laundry
living area
dining
kitchen



from \$272,550*

* Deck is not a Standard Inclusion

* Please note this price includes GST and is based on ArchiBlox standard inclusions.

Upgrades, site works and transport costs are calculated per project.