

# Axel 01

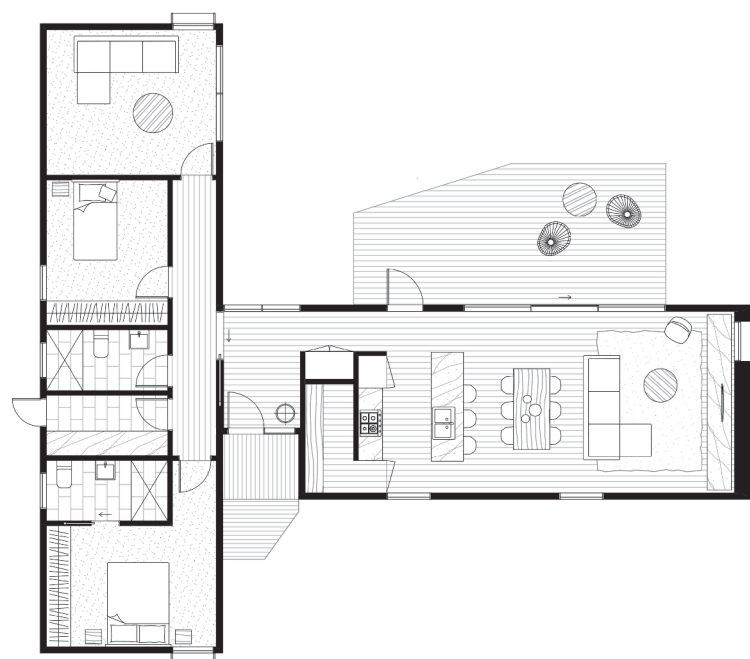
Axel is derived from its flexibility in response to the wind and sun, and it's ability to adapt to various terrains and environments. This home uses two modules to create a humble separation between the living and sleeping zones. The open-plan kitchen-living area welcomes an abundance of natural light into the space and includes the luxury of a spacious walk in pantry. An additional secluded living room in the second module creates a relaxing area away from the main living zone. The two modules zones can be isolated to ensure the efficient use of heating and cooling systems when required.

Size: 130 (m<sup>2</sup>)

Deck Size: 30 (m<sup>2</sup>)\*

Dimensions: 15.6 x 17.7 (m)

Rooms: 2 bedrooms  
2 bathrooms  
2 living areas  
dining  
kitchen  
walk-in-pantry  
laundry



## from \$422,830\*

\* Deck is not a Standard Inclusion

\* Please note this price includes GST and is based on ArchiBlox standard inclusions.

Upgrades, site works and transport costs are calculated per project.

P Studio 5, 151 Barkly Ave, Burnley, Victoria 3121 T 1300 773 122 E hello@archiblox.com.au W www.archiblox.com.au