

# Joss 02

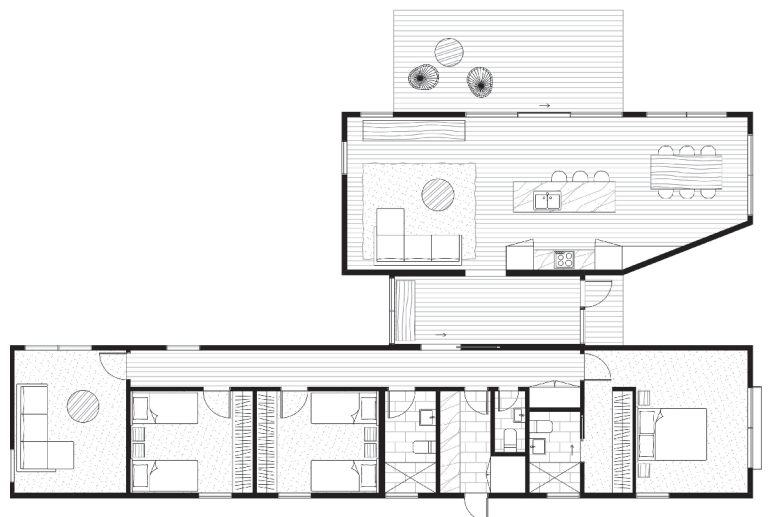
A two-module layout creates the perfect orientation for northerly solar gain through the kitchen, dining and living areas of the Joss. The sleeping areas are separated from the main living area providing peace and quiet when required. The independent entry space provides a humble transition between the outside world and your beautiful home, as well as an intermediate space between the living and rest areas.

Size: 165 (m<sup>2</sup>)

Deck Size: 23 (m<sup>2</sup>)\*

Dimensions: 11.4 x 21.9 (m)

Rooms: 3 bedrooms  
2 bathroom  
powder room  
2 living area  
dining  
kitchen  
laundry



## from \$508,620\*

\* Deck is not a Standard Inclusion

\* Please note this price includes GST and is based on ArchiBlox standard inclusions.

Upgrades, site works and transport costs are calculated per project.