

Juno 03

Easily broken up into separate living and bedroom wings, Juno is flexible enough to work across a range of sites whilst maximising solar gain and cross flow ventilation. The central connection has the ability to act as an air lock between the two modules, reducing heat loss or gain as you enter the front door and encourages efficient use of heating and cooling systems. Juno provides generous space for carefree living, making it well suited to large country and beach properties.

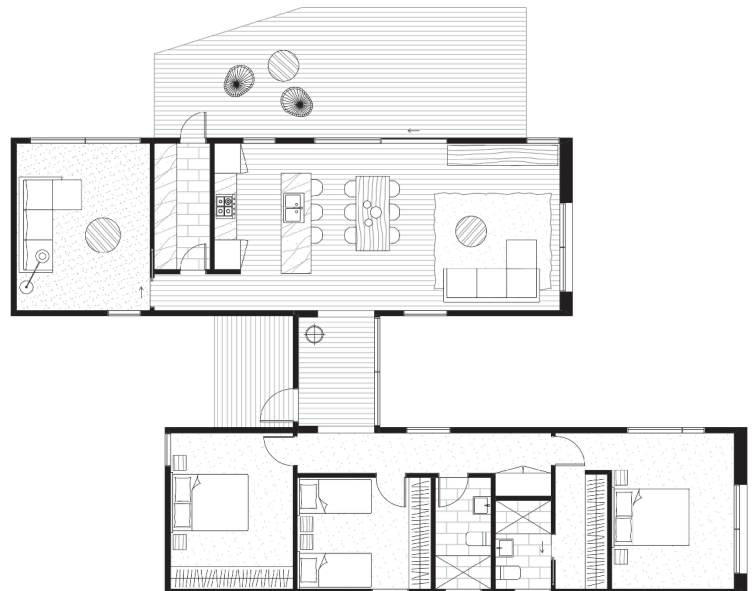
Size: 150 (m²)

Deck Size: 33 (m²)*

Dimensions: 12.3 x 19.8 (m)

Rooms:

- 3 bedrooms
- 2 bathroom
- 2 living area
- dining
- kitchen
- walk in pantry
- laundry



from \$475,410*

* Deck is not a Standard Inclusion

* Please note this price includes GST and is based on ArchiBlox standard inclusions.

Upgrades, site works and transport costs are calculated per project.

P PO Box 622 WONTHAGGI 3995 VICTORIA T 1300 773 122 E hello@archiblox.com.au www.archiblox.com.au