

# Marlo 03

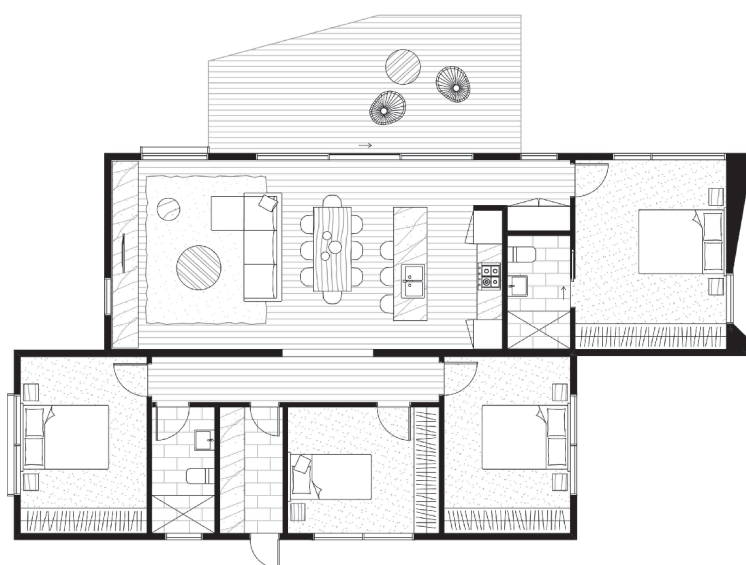
Marlo captures with careful consideration all the things essential to a large family. Boasting a generous open plan kitchen and living area, Marlo is excellent for social entertaining or completely closing off from the world for shelter, warmth and intimacy. The living area opens onto an expansive deck, which allows for seamless connection to nature. This format is suitable for urban or rural sites and can be oriented to maximise northerly solar gain through the living areas taking advantage of passive heating and cooling techniques.

Size: 131 (m2)

Deck Size: 22 (m2) \*

Dimensions: 9.2 x 17.5 (m)

Rooms: 4 bedrooms  
2 bathrooms  
living area  
dining  
kitchen  
laundry



## from \$415,880\*

\* Deck is not a Standard Inclusions

\* Please note this price includes GST and is based on ArchiBlox standard inclusions.

Upgrades, site works and transport costs are calculated per project.