

Orlo 01

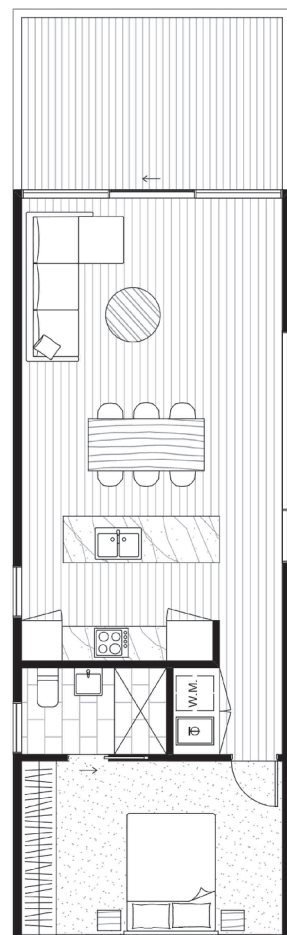
Contemporary in design and sustainable in function, Orlo provides an abundance of natural light and blends comfortable living with easy entertaining. This stunning family home is low maintenance and can be orientated on many sites to maximise passive solar principles and energy savings. The seamless interaction between the indoor and outdoor spaces, makes this design suitable for the perfect holiday getaway or permanent residence.

Size: 63 (m²)

Deck Size: 15 (m²)*

Dimensions: 4.6 x 13 (m)

Rooms: bedroom
bathroom
Euro laundry
living area
kitchen
dining



from \$216,280*

* Deck is not a Standard Inclusion

* Please note this price includes GST and is based on ArchiBlox standard inclusions.

Upgrades, site works and transport costs are calculated per project.