

# Orlo 02

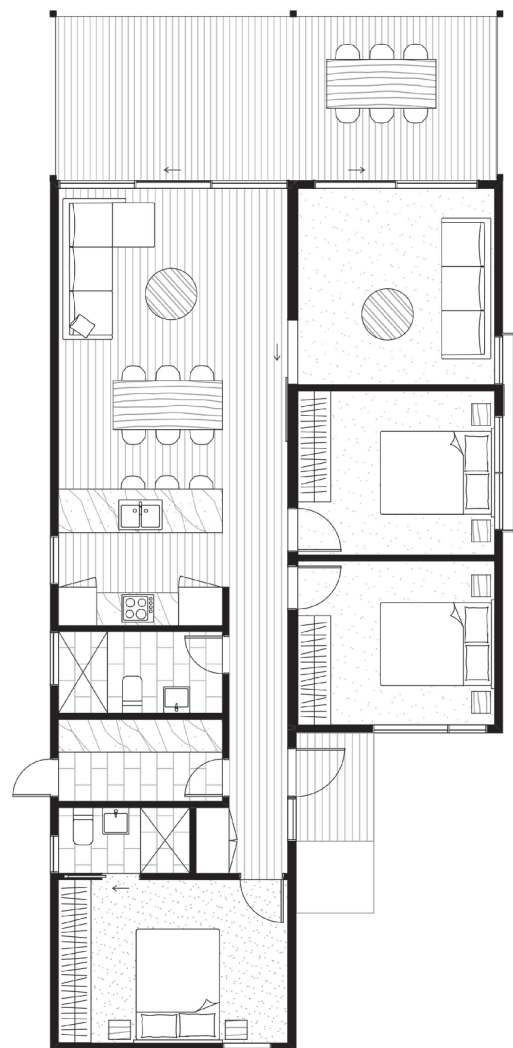
Broken into two distinct wings, the ease and flexibility of Orlo is endless. Contemporary in design and sustainable in function, Orlo provides an abundance of natural light and blends comfortable living with easy entertaining. This stunning family home is low maintenance and can be orientated on many sites to maximise passive solar principles and energy savings. The seamless interaction between the indoor and outdoor spaces, as well as the luxury of multiple living rooms, makes this design suitable for the perfect holiday getaway or permanent residence.

Size: 110 (m<sup>2</sup>)

Deck Size: 27 (m<sup>2</sup>)\*

Dimensions: 8.3 x 16 (m)

Rooms: 3 bedrooms  
2 bathroom  
2 living area  
dining  
kitchen  
laundry



## from \$358,200\*

\* Deck is not a Standard Inclusion

\* Please note this price includes GST and is based on ArchiBlox standard inclusions.

Upgrades, site works and transport costs are calculated per project.