

Sunday 05

Sunday has been carefully crafted using Japanese design principles to maximise functional areas in the home, by eliminating unused, dead space. Its design promotes the separation of living and sleeping areas, which optimises the efficient use of heating and cooling systems. This home suits most blocks and can be easily tweaked to suit an east west or north south orientation, ensuring great indoor and outdoor living all year round.

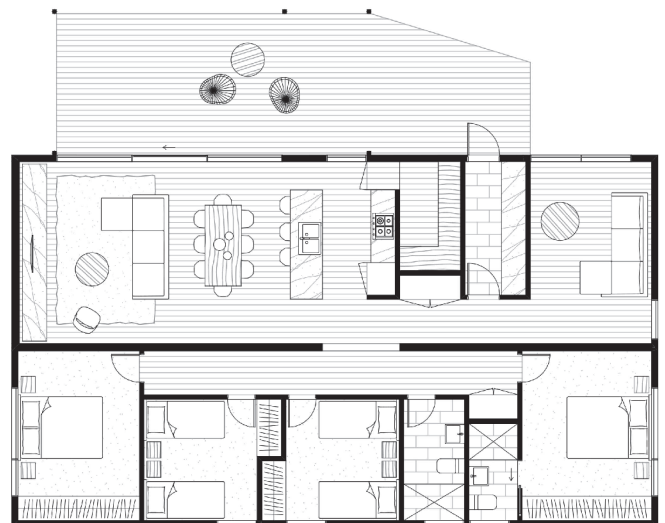


Size: 147 (m²)

Deck Size: 39 (m²)*

Dimensions: 9.2 x 16 (m)

Rooms: 4 bedrooms
2 bathrooms
2 living areas
dining
kitchen
walk in pantry
laundry



from \$445,630*

* Deck is not a Standard Inclusions

* Please note this price includes GST and is based on ArchiBlox standard inclusions.

Upgrades, site works and transport costs are calculated per project.