

Hygge 01

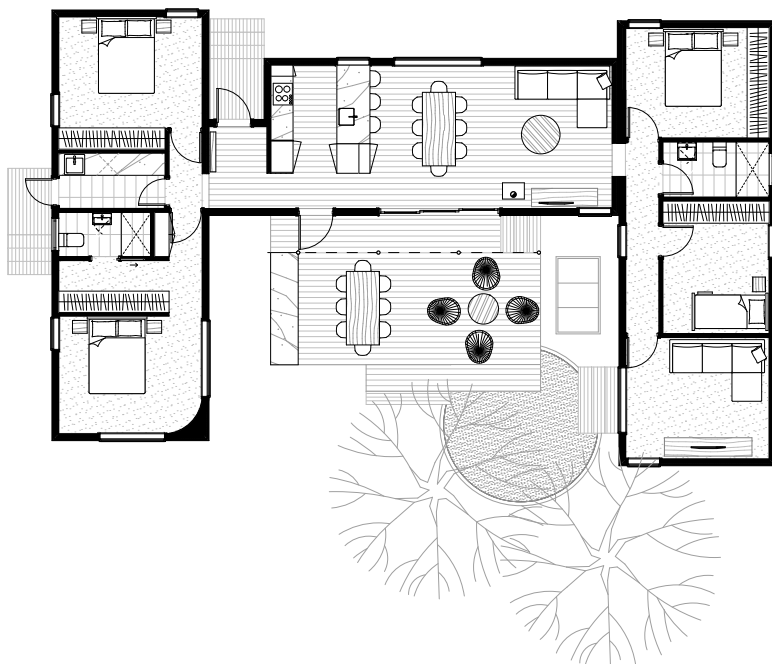
Pronounced HOO-gah - This 'U' shape design perfectly embraces the land and its occupants – private at the front & open at the rear. This home wraps around a central courtyard, giving each room in the home access to plenty of light & views of the outdoors.

The 'Hygge' layout is all about increasing happiness & comfort. This low-maintenance, but stylish abode, uses passive design to make the most of winter sun & cooling cross breezes in summer, ensuring homeowners get back to enjoying those everyday moments in life without discomfort & expensive utility bills.

Size: 150 (m²)

Dimensions: 12.1 x 19.7 (m)

Rooms: 4 bedrooms
2 bathrooms
2 living areas
dining
kitchen
laundry



from \$585,673*

*Decks are not a standard inclusion.

*Please note this price includes GST and is based on ArchiBlox standard inclusions. Upgrades, site works and transport costs are calculated per project.