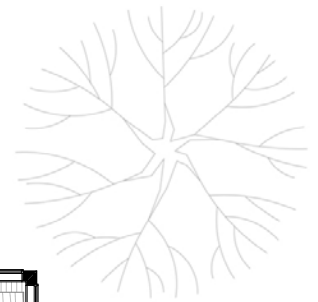


Max 04

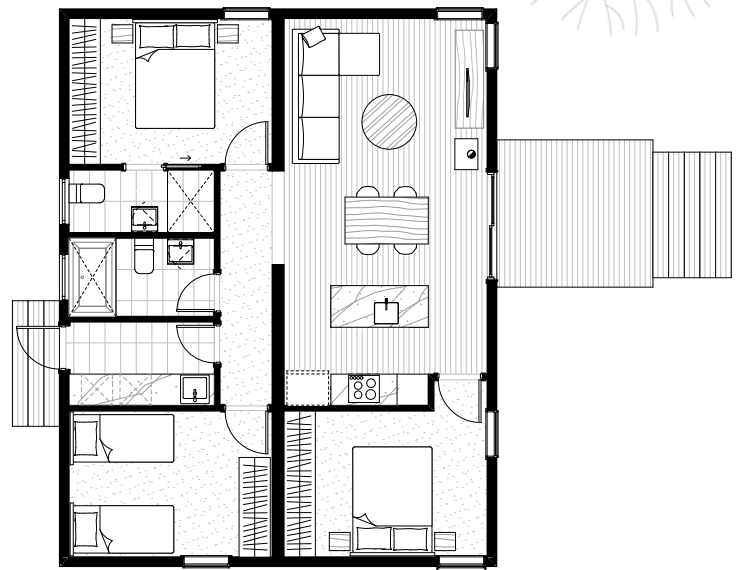
Side by side modules connect together to create an inclusive family hub. This home is all about intimacy while still providing privacy. An open plan living/entertaining area is complete with the multi-functional communal kitchen island which makes socialising a breeze. Passive design principles are employed throughout this design, providing energy savings and year-round comfort. Large glazed doors align with the entry to the bedroom zones allowing cross breezes to easily ventilate the entire home.



Size: 90 (m²)

Dimensions: 10.7 x 8.4 (m)

Rooms: 3 bedrooms
2 bathrooms
laundry
living area
dining
kitchen



from \$301,312*

*Please note this price includes GST and is based on ArchiBlox standard inclusions. Upgrades, site works and transport costs are calculated per project.